

Date

Project

Type

## Wraparound

**BL-WR-246-25W-STTN**

### FEATURES

<b>Model #:</b>	BL-WR-246-25W-STTN	<b>Voltage:</b>	100-277 Vac
<b>CCT:</b>	3000 K, 4000 K, 5000 K	<b>Light Source Type:</b>	SMD2835
<b>Light Output:</b>	2000 lm	<b>CRI:</b>	>80 Ra
<b>Efficacy (AC):</b>	80 lm/W	<b>Working Temperature:</b>	-40-104° F
<b>Wattage:</b>	25 W	<b>Power Factor:</b>	0.95
<b>Beam Angle:</b>	100°	<b>THD:</b>	<20%

### Order Information



**WR**

**Size**

**Wattage**

**CRI**

**CCT**

**Dimmable**

WR - Wraparound

246

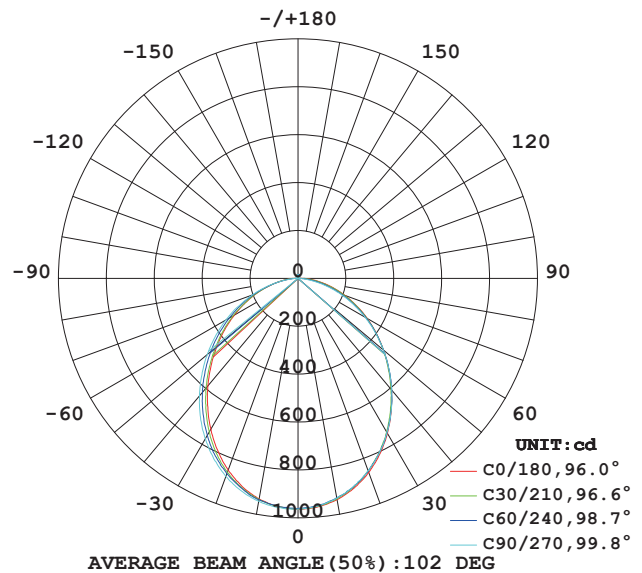
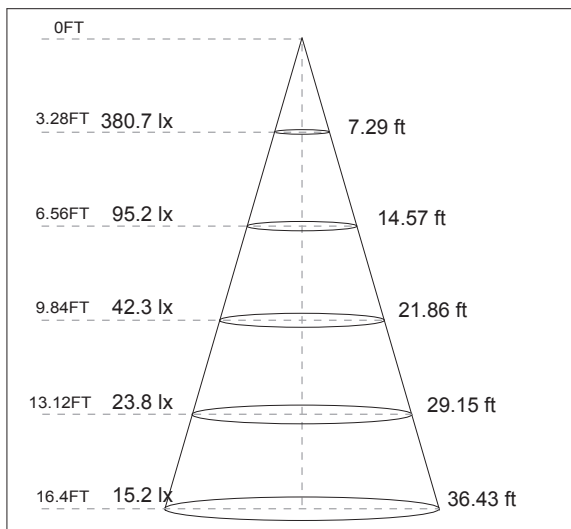
25 W

>80 Ra

30 - 3000K  
40 - 4000K  
50 - 5000K

N - Non-dimmable

### Lux Chart/Photometrics



ETL Listing: 4007551



Energy Star:



**IESNA LM-79 & IESNA LM-80 Testing:**

This product has been tested by an independent laboratory in accordance with IESNA LM-79 and 80, and have received the department of energy" lighting facts" label.

**White Finish:**

Environmentally friendly polyester powder coatings are formulated for high-durability and long-lasting color, and contain no VOC or toxic heavy metals.

**Green Technology:**

Mercury and UV free RoHS compliant components polyester powder coat finish formulated without the use of VOC or toxic heavy metals.

**Driver:**

Constant current, class 2, 100-277Vac,50/60HZ

**Lifespan:**



50,000-hour LED lifespan based on IES LM-80 results and TM-21 calculations.



**LED Characteristics**

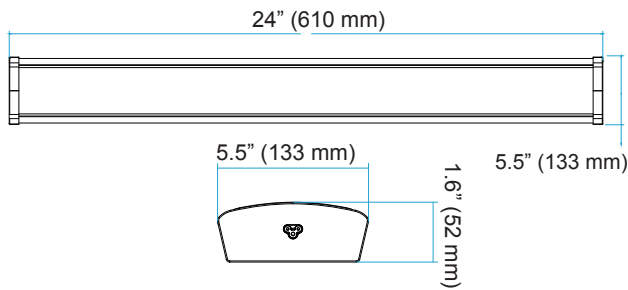
**LEDs:** Long-life, high-efficiency SMD2835, patent free.

**Color Stability:** Comply with DLC's requirements.

**Color Uniformity**

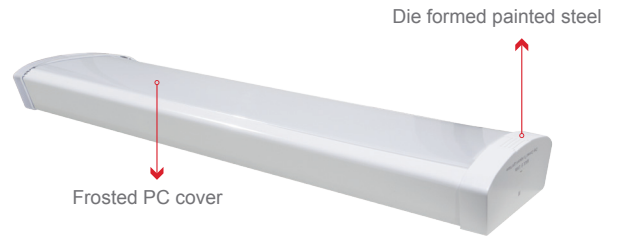
CCT (Correlated Color Temperature) follows the guidelines of the American National Standard for Specifications for the Chromaticity of Solid State Lighting (SSL) Products, ANSI C78. 377-2015.

**Dimension:**

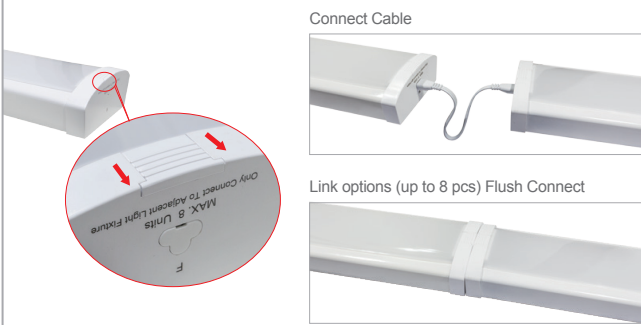


Weight: 2.66 Lbs (1.21 Kg)

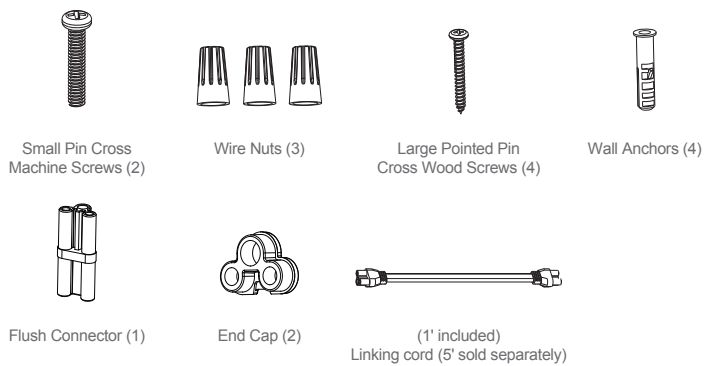
**Housing:**



**Show Details:**



**Accessories:**



**Installation:**



Surface Mount